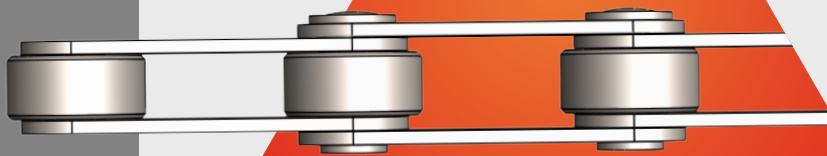
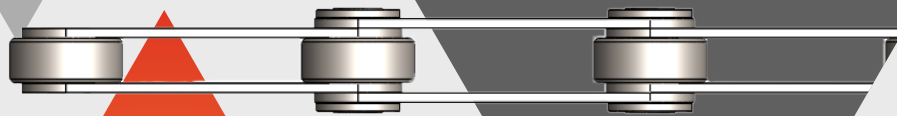
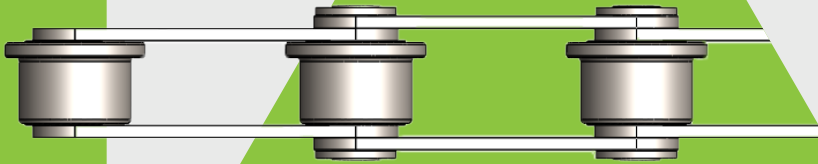


CATÁLOGO

corrientes



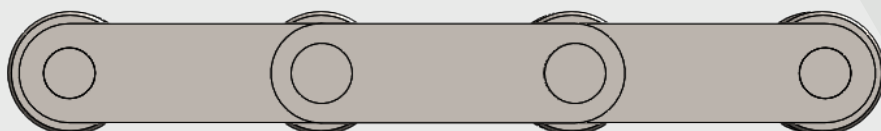
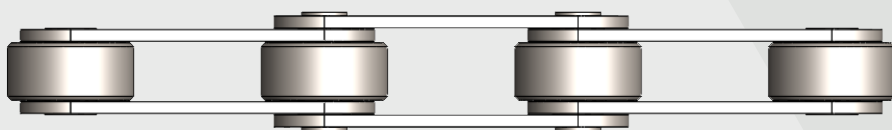
FWI[®]
TECNOLOGIA PARA MÁQUINAS

Corrente Passo Longo

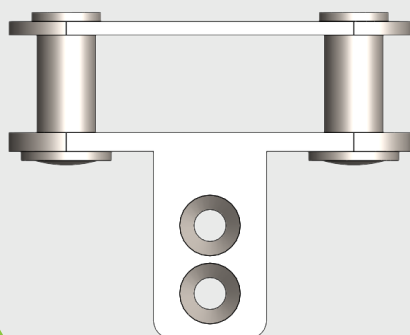
Rolos Grandes e Pinos Ocos



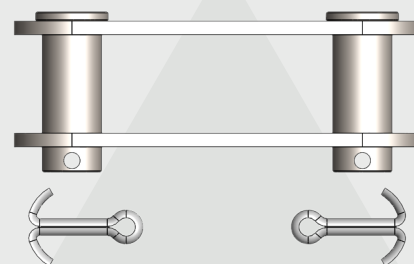
Rolos Grandes e Pinos Maciços



Acessórios Disponíveis



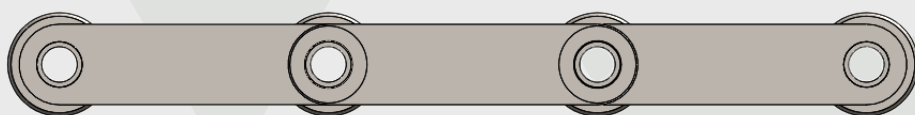
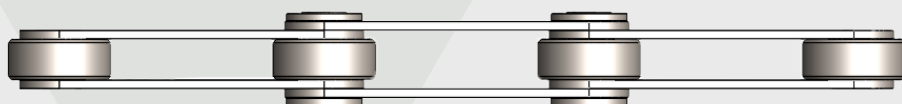
Emenda



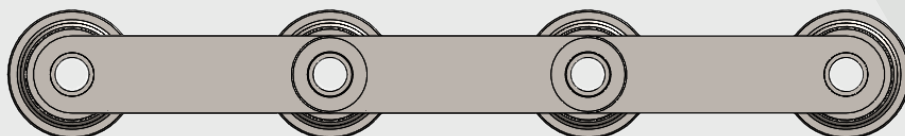
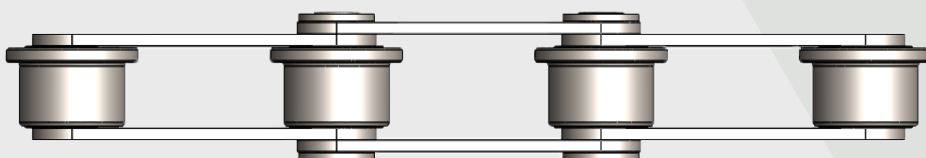
Adicional A2-E

Corrente Extra Longo

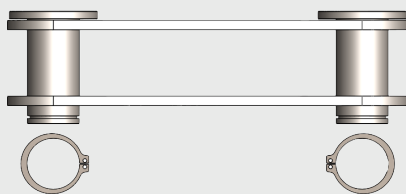
Rolos Normais



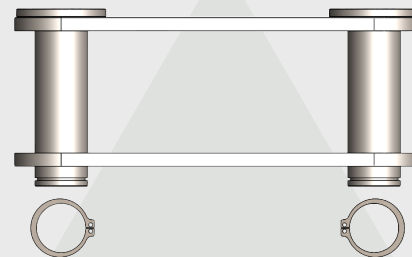
Rolos Decauville



Acessórios Disponíveis



**Emenda P-150
normal**

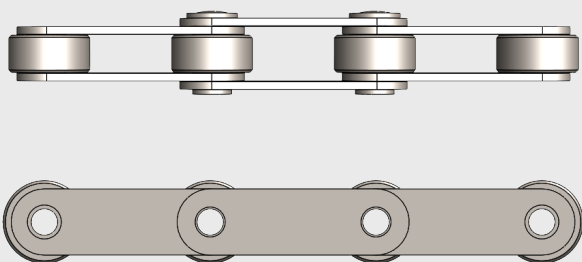


**Emenda P-150
decauville**

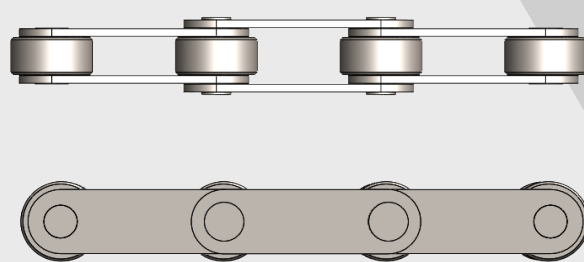
DESCRIÇÃO TÉCNICA

passo longo

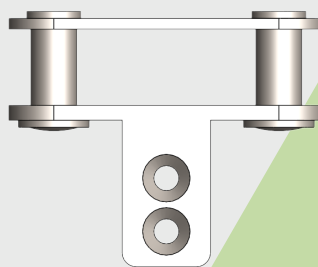
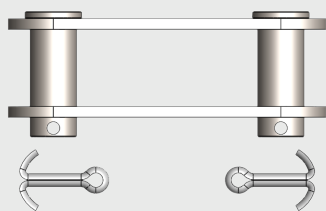
Rolos Grandes e Pinos Ocos



Rolos Grandes e Pinos Maciços



Modelo	Passo	Entre Placas	Ø Rolo	Ø Pino	Ø Furo do Pino	Largura Total	Altura das Placas	Espessura das Placas
	P	C	B	G	F	D	H	T
	mm	mm	mm	mm	mm	mm	mm	mm
Pino maciço	38,1	13	25,4	10		30	19	3
Pino oco					7	28		
Pino maciço	63,5	15	31,75	13		32	25,4	3
Pino oco					10	30		

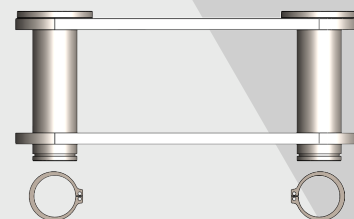
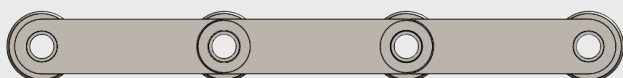


Emenda		Adicional A2-E					
Passo	A	B	C	D	E	F	G
mm	mm	mm	mm	mm	mm	mm	mm
38,1	32	67,5	42,5	15	4,2	7	20
63,5	33	69,5	44,5	15	4,2	7	25

DESCRIÇÃO TÉCNICA

extra longo

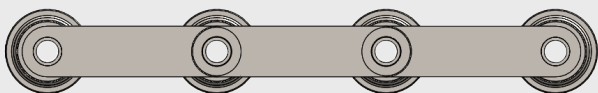
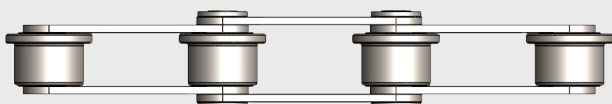
Rolos Normais



Passo	Entre Placas	Ø Rolo	Ø Furo do Pino	Largura Total	Altura das Placas	Espessura das Placas
P	C	B	F	D	H	T
mm	mm	mm	mm	mm	mm	mm
100	23,5	58	19,5	53,2	45	4,7
150	23,5	58	19,5	53,2	45	4,7

Emenda		
Passo	A	
mm	mm	
150	Normal	52
	Decauville	81
200	Normal	-
	Decauville	81

Rolos Decauville



Passo	Ø Rolo	Ø Ressalto do rolo	Largura do rolo	Largura do ressalto	Ø Furo do pino	Largura total	Altura das Placas	Espessura das placas
P	B	E	J	K	F	D	H	T
mm	mm	mm	mm	mm	mm	mm	mm	mm
100	59,8	75	35	8	19,5	81,8	45	6,3
150	59,8	75	35	8	19,5	81,8	45	6,3
200	59,8	75	35	8	19,5	81,8	45	6,3